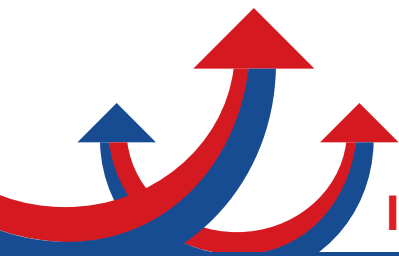




# The Historical Museum of Petrich, structure and content

**Sotir Ivanov**  
**Municipality of Petrich**

**1st publicity event in Serres,  
Asteria Theater, Serres, 01.06.2018**



**INVESTORS IN CULTURE for fighting crisis**



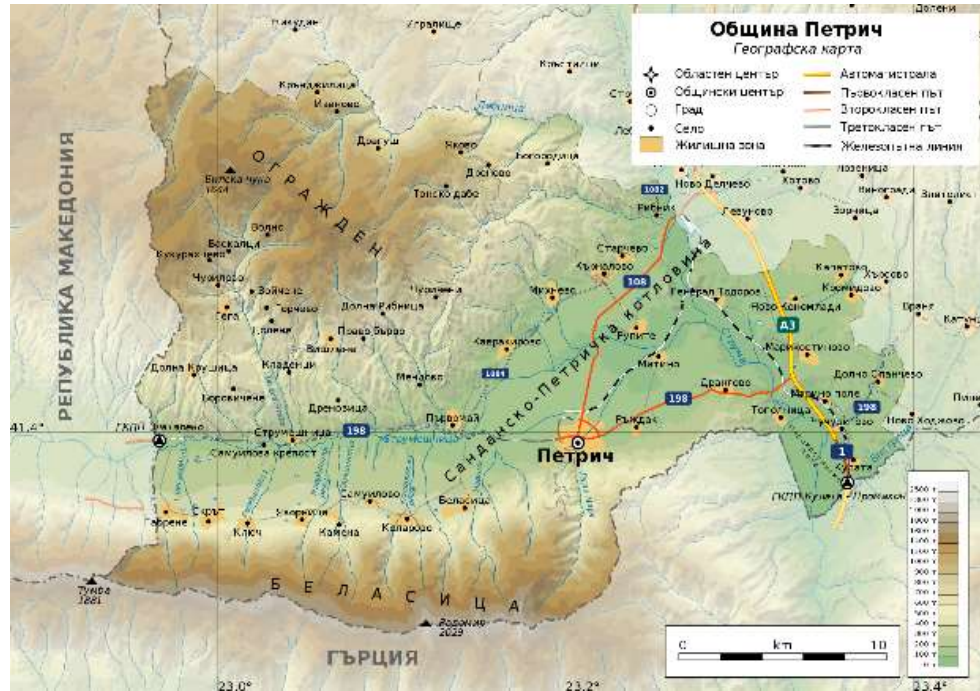
ARISTOTLE  
UNIVERSITY OF  
THESSALONIKI



DEMOCRITUS  
UNIVERSITY  
OF THRACE

The Project is co-funded by the European Regional Development Fund and by national funds of the countries participating in the Interreg V-A "Greece-Bulgaria 2014-2020" Cooperation Programme.

# Municipality of Petrich



# History Museum Departments

Department of Prehistory and Promachon- Topolnica

Antiquity Department and Heraclea Sintica

Middle Ages Department and National Park- Museum Samuilova Krepost

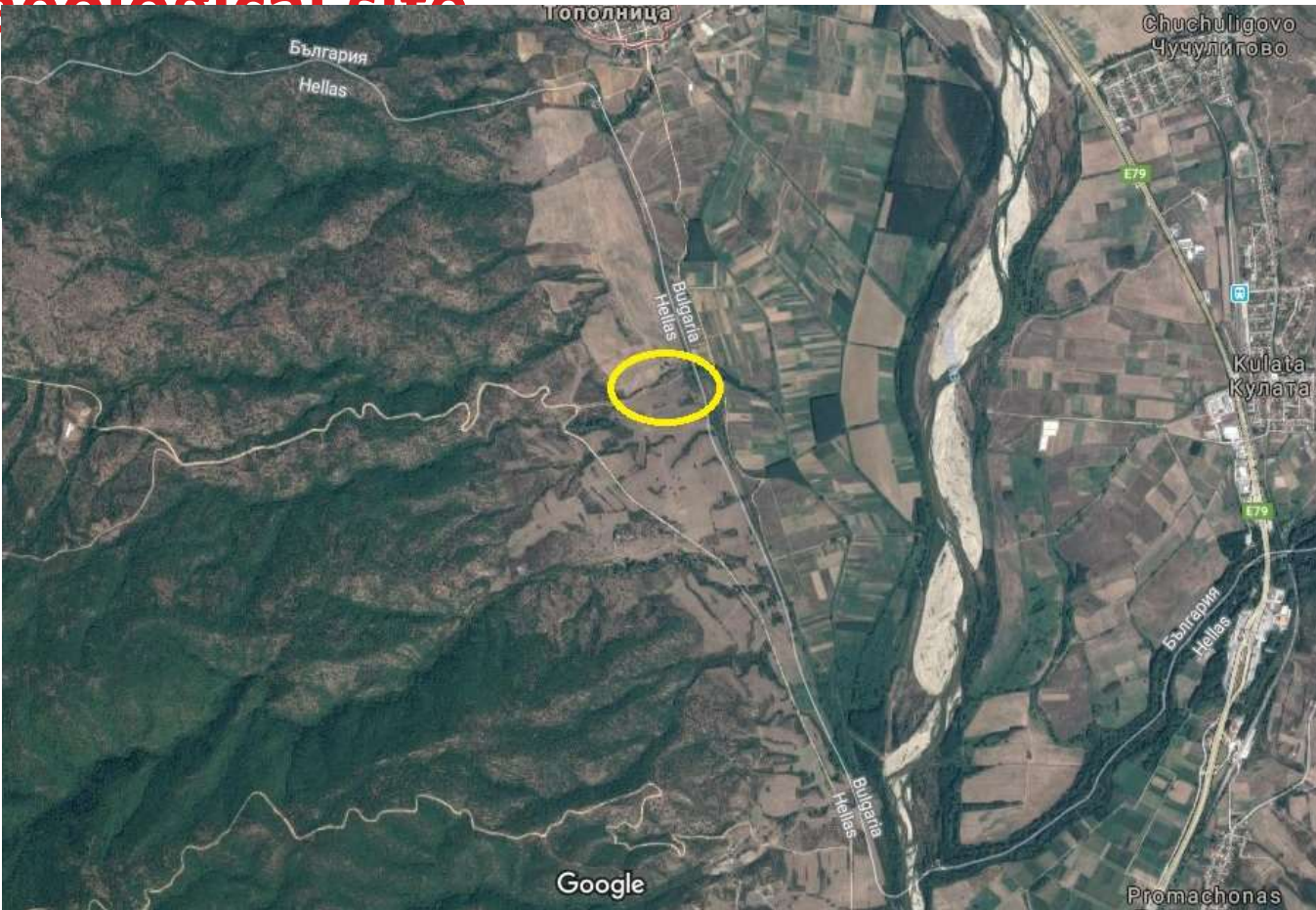
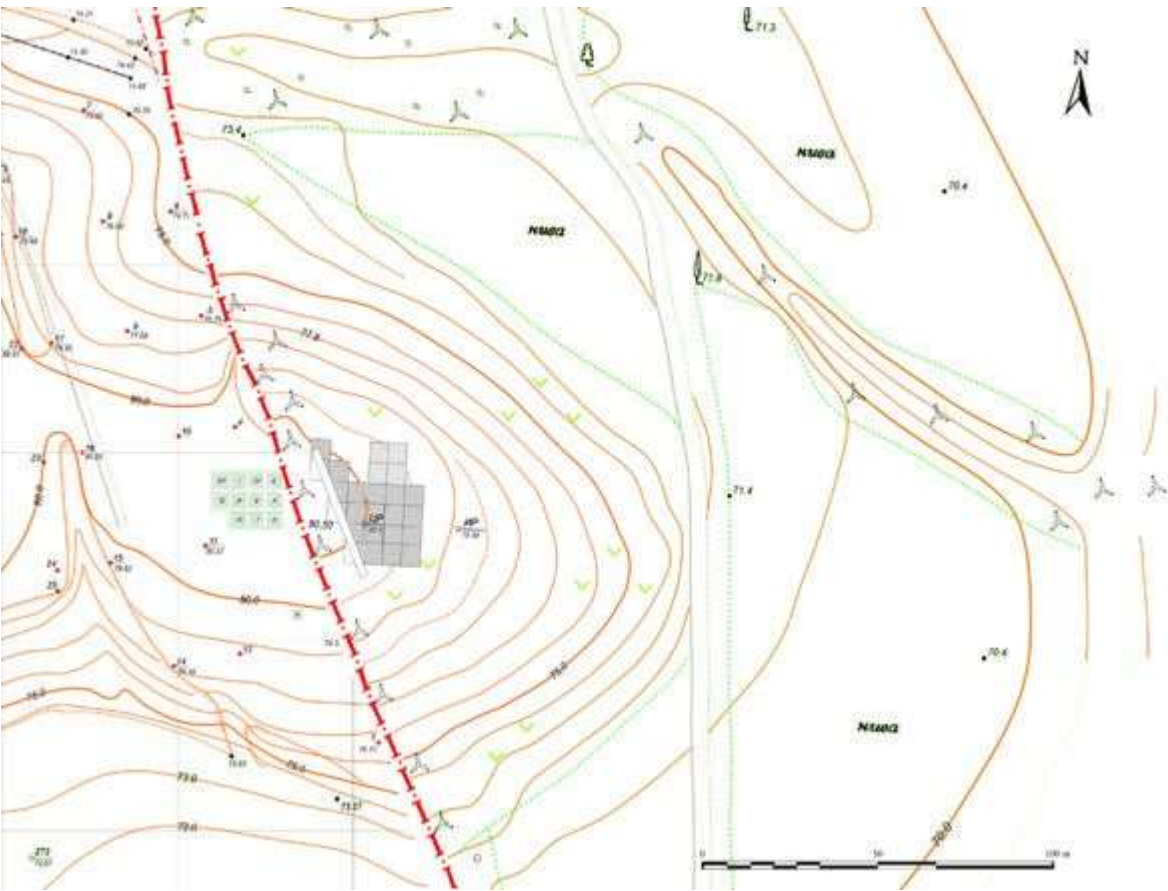
Department Bulgarian Land in the 15<sup>th</sup> -19<sup>th</sup>

Department of Ethnography and House of Vanga



# Prehistory

## Promachon- Topolnica archaeological site



# The Promahon – Topolnitsa settlement





# Ancient city of Heraclea Sintica





# Antiquity department



# Antiquity department





# Antique Numismatics



Kassander 316 - 297 BC



Philip V 221 - 179 BC



Perseus



Pella 187 - 31 BC



3 Thessalonica



3 Autonomous coinage



# Middle ages

## National Park-Museum Samuilova Krepost





# Middle ages

## National park-museum Samuilova krepost



# Middle ages Giaur kalesi





# Ethnography



# Ethnography





# Vanga House



# Bulgarian Lands in the 15<sup>th</sup>-19<sup>th</sup> Century





# New and Newest History



# Petrich History Museum





# Existing building for reconstruction and converting to museum building

Exterior



# Petrich History Museum

New Museum building

Exterior





# Petrich History Museum

New Museum building

Exterior



# Petrich History Museum

New Museum building

Interior 1<sup>st</sup> level





# Petrich History Museum

New Museum building

Interior 2<sup>nd</sup> level



# Petrich History Museum

New Museum building Interior 1<sup>st</sup> level





# Petrich Municipal Park

Main facilities at the Petrich Municipal park are:

Children's playgrounds

Sports grounds

Amphitheatre

Water facilities



There are also a visitors' center, a parque pavilion, climbing facilities, a zoo-spot, a dry fountain, a parking lot



# Petrich Municipal Park

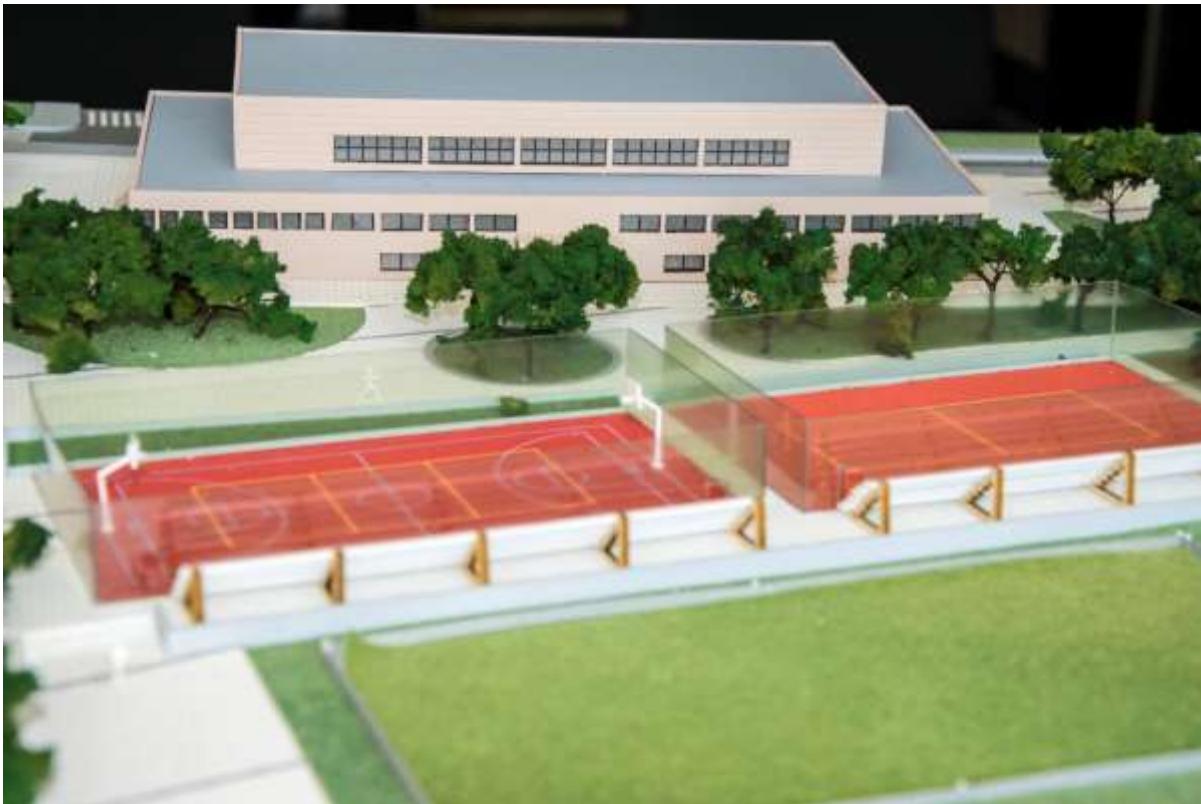
## Children's playgrounds





# Petrich Municipal Park

## Sports grounds



# Petrich Municipal Park

## Amphitheatre





# Petrich Municipal Park

## Water facilities





# Firm and long lasting partnership between the municipalities of Serres and Petrich



# Promo Safe Driving Project Safe Driving School



# Promo Safe Driving Project Traffic Education Park





# Sport for All Project Petrich Sports Hall





**Thank you for your attention!**

**[www.culturaldipole.eu](http://www.culturaldipole.eu)**

[www.facebook.com/culturaldipole](https://www.facebook.com/culturaldipole)

[interreg@culturaldipole.eu](mailto:interreg@culturaldipole.eu).

*The project is co-funded by the European Regional Development Fund and by national funds of the countries participating in the Interreg V-A "Greece- Bulgaria 2014-2020" Cooperation Programme.*

